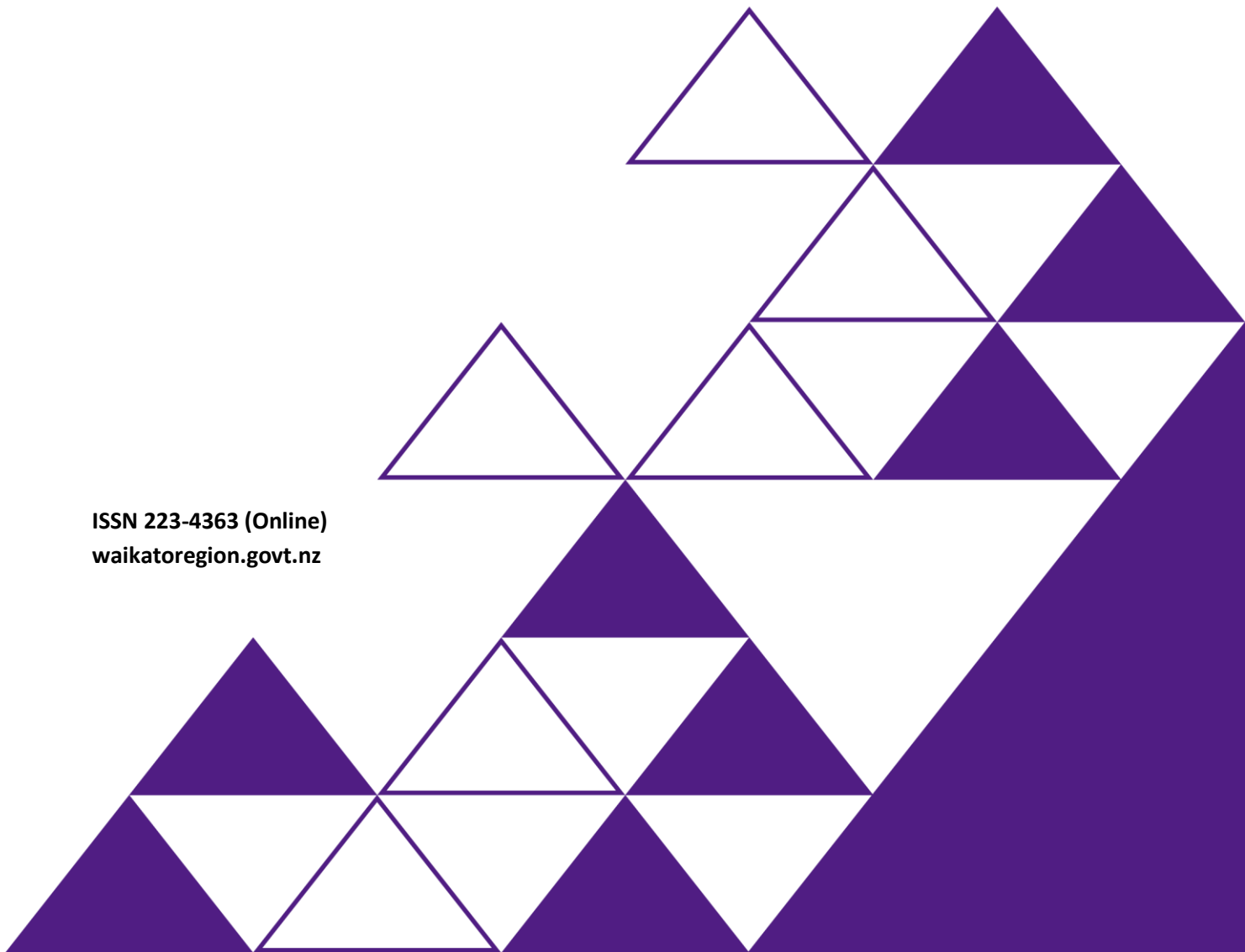


# Waikato progress indicators – Tupuranga Waikato

## Summary update June 2025

ISSN 223-4363 (Online)  
[waikatoregion.govt.nz](http://waikatoregion.govt.nz)





Prepared by	Beat Huser
For	Waikato Regional Council Private Bag 3038 Waikato Mail Centre HAMILTON 3240
Publication date	June 2025
Document ID	31950989

	Name	Date
Peer Reviewer	Upananda Paragahawewa	May 2025
Approving Manager	Miffy Foley	June 2025

## Disclaimer

This technical report has been prepared for the use of Waikato Regional Council as a reference document and as such does not constitute Council's policy.

Council requests that if excerpts or inferences are drawn from this document for further use by individuals or organisations, due care should be taken to ensure that the appropriate context has been preserved, and is accurately reflected and referenced in any subsequent spoken or written communication.

While Waikato Regional Council has exercised all reasonable skill and care in controlling the contents of this report, Council accepts no liability in contract, tort or otherwise, for any loss, damage, injury or expense (whether direct, indirect or consequential) arising out of the provision of this information or its use by you or any other party.



# Table of contents

<b>1</b>	<b>Purpose</b>	<b>1</b>
<b>2</b>	<b>Latest results</b>	<b>2</b>
2.1	Indicator Report Cards	2
2.2	Waikato Region Scorecard	2
2.3	Circles of Wellbeing	5
2.4	Comparison of Waikato with other regions and New Zealand	7
<b>3</b>	<b>Economic trends</b>	<b>9</b>
3.1	WPI results	9
3.2	Additional economic context and insights	10
<b>4</b>	<b>Social and cultural trends</b>	<b>11</b>
4.1	WPI results	11
4.2	Additional social and cultural context and insights	12
<b>5</b>	<b>Environmental trends</b>	<b>14</b>
5.1	WPI results	14
5.2	Additional environmental context and insights	14
<b>6</b>	<b>Overall progress (wellbeing index)</b>	<b>16</b>
<b>7</b>	<b>Other wellbeing initiatives</b>	<b>17</b>
<b>8</b>	<b>Next steps</b>	<b>17</b>
	<b>References</b>	<b>19</b>
<b>Appendix 1</b>	<b>The Waikato Progress Indicators</b>	<b>20</b>
<b>Appendix 2</b>	<b>WPI time series data 2001 to 2024</b>	<b>23</b>

## Figures

Figure 1	WPI trends – Scorecard for approximately 2006-07 to latest available data	4
Figure 2	WPI indicator long-term and short-term trends, Waikato region	6
Figure 3	Comparison Waikato region with New Zealand (selected indicators only)	8
Figure 4	Real value of new building consents authorised per capita (\$) (annual – Dec)	9
Figure 5	Real GDP per person (2024 dollars)	9
Figure 6	Public transport use per person	11
Figure 7	Waikato regional gross greenhouse gas emissions (million tonnes CO2 equivalent)	14
Figure 8	GDP vs Waikato Wellbeing Index (CIW method) 2001-2024 (provisional)	16

## Tables

Table 1	Comparison of WPI with selected other regions and New Zealand	7
---------	---	---



# 1 Purpose

This document summarises latest results from the Waikato Progress Indicators (WPI) – *Tupuranga Waikato* monitoring programme, updated in May 2025. The WPI is an online dashboard of 32 environmental, social, cultural and economic indicators.<sup>1</sup> The WPI framework and indicators are aligned with the Council’s Strategy and its purpose of “*working together for a Waikato region that has a healthy environment, strong economy and vibrant communities*”.<sup>2</sup>

The WPI dashboard provides an overview of the economic, social, cultural and environmental wellbeing of the Waikato region and helps gauge progress towards Waikato Regional Council’s (WRC’s) strategic priorities and community outcomes.<sup>3,4</sup> Selected measures relevant to Council’s activities are included in WRC’s Long Term Plan 2021-2031,<sup>5</sup> annual plans/reports and other council documents.

The WPI data and [website](#) information are refreshed at least annually.

This update compares the latest available data for each of the WPI indicators with 2006-07 baseline results<sup>6</sup> as well as more recent trends, enabling regional progress to be assessed over more than a decade as well as over the last 4-5 years. Around half of the WPI indicators also have historical data going back to 2001 or earlier, giving a longer-term view. The aim is to inform the Waikato public, planners and decision-makers of genuine progress against key indicators of wellbeing in the Waikato region.

The 32 WPI indicators (Appendix 1) were selected as success measures for the region, building on existing good practice programmes including the Waikato Regional Council environmental indicators and the former MARCO (monitoring and reporting community outcomes) indicator programme.<sup>7</sup> The MARCO indicators were based on desired community outcomes identified in a comprehensive and participatory stakeholder process (*Choosing Futures Waikato – “what matters most to our people and communities”*). For further background on the development and design of the WPI programme including the selection of indicators, refer to Killerby and Huser (2014).<sup>8</sup>

The structure of this update report is:

1. Purpose
2. Latest results
3. Economic trends
4. Social and cultural trends
5. Environmental trends
6. Overall progress (wellbeing index)
7. Other wellbeing initiatives.

---

<sup>1</sup> [www.waikatoregion.govt.nz/wpi/](http://www.waikatoregion.govt.nz/wpi/)

<sup>2</sup> [Waikato Regional Council - Strategic direction](#)

<sup>3</sup> [Waikato Regional Council - Strategic direction](#)

<sup>4</sup> [Community outcomes | Waikato Regional Council](#)

<sup>5</sup> [2024-2034 Mahere Whānui Long Term Plan | Waikato Regional Council](#)

<sup>6</sup> 2006/07 was chosen as the baseline because data for most of the 32 indicators are available from then.

<sup>7</sup> <https://www.waikatoregion.govt.nz/community/about-the-waikato-region/marco/>

<sup>8</sup> [www.waikatoregion.govt.nz/assets/WRC/WRC-2019/TR201444.pdf](http://www.waikatoregion.govt.nz/assets/WRC/WRC-2019/TR201444.pdf)

## 2 Latest results

Results from the WPI monitoring programme are presented through Indicator Report Cards; Waikato Region Scorecard; Circles of wellbeing; and comparisons with other regions and New Zealand.

The 32 indicators and how they relate to community aspirations and outcomes, are described in Appendix 1. The results for each indicator (primary dataset 2001 to latest available data) are tabulated in Appendix 2.

### 2.1 Indicator Report Cards

Results for each indicator are summarised in online Report Cards, along with supporting information. These are available online at: [www.waikatoregion.govt.nz/wpi/](http://www.waikatoregion.govt.nz/wpi/). Each of the 32 report cards includes a summary of the current state and recent changes and trends in relation to that indicator (results) and information about what the indicator means, why it is important and how the results were obtained (for example, by listing the data source).

### 2.2 Waikato Region Scorecard

The Scorecard (Figure 1) gives an overview of the Waikato region's progress towards wellbeing since approximately 2006-07.

Positive measured trends over the period approximately 2006-07 to latest available data are, in declining order (most positive trend first):

- + Increased road safety – long-run decrease in the social cost per capita of road injury crashes, from a peak of approximately \$5,563 in 2007 (expressed in 2024 dollars) down to \$3,392 in 2023.<sup>9</sup>
- + Higher average incomes – increase in real median weekly household income from around \$1,725 in 2007 (expressed in 2024 dollars) to \$2,120 in 2024.
- + Growth in regional GDP – increase in real regional GDP per capita from approximately \$59,400 per annum in 2007 (expressed in 2024 dollars) to around \$68,600 in 2024.
- + Decreased growth in greenhouse gases – decrease in regional annual greenhouse gas emissions from approximately 15.9 million tonnes of carbon dioxide equivalent (Mt CO<sub>2</sub>e) in 2007 to 13.7 million tonnes in 2023.
- + Improved perceptions of safety – increase in the percentage of people who report feeling safe walking alone in their neighbourhood after dark, from 60% in 2006 to 66% in 2024.
- + Growth in te reo Māori speakers – increase in the percentage of people who say they speak te reo Māori from 5.8% in the 2006 Census to 6.3% in 2023.
- + More recycling – increase in the percentage of people who said their household recycles 'all/most of' their waste, from approximately 66% in 2008 to 70% in 2012.<sup>10</sup>
- + Longer life expectancy – currently approximately 80 years for males and 83 years for females. Gains in life expectancy since the mid-1980s can be attributed to better living standards and improved health care.

---

<sup>9</sup> Despite a significant improvement in road safety over the last decade, the Waikato region still has a higher cost of road crashes per person than the national average (see Table 1 and Figure 3). This is influenced by the extent of open roads and substantial transit traffic through the region. Also note, the social cost estimates here are substantially higher than in previous WPI updates because the base Value of Statistical Life (VOSL) was redone in a study published in 2023.

<sup>10</sup> Frequency of this question under the New Zealand General Social Survey (Statistics NZ) framework will likely be at least 10 yearly intervals. There has been no recycling question in the GSS since 2012.



Negative trends over the period approximately 2006-07 to latest available data include, in declining order (most negative trend first):

- Lower frequency of physical activity – decrease in the percentage of Waikato survey respondents who report having been physically active on five or more of the past seven days, from 61% in 2006 to 31% in 2024.
- Poorer perceptions of community engagement – decrease in the percentage of Waikato survey respondents who agreed that the public has an influence over the decisions their local Council makes, from 62% in 2006 to 35% in 2024.
- More waste to landfill – the estimated tonnage of waste to class 1 landfill per year in the Waikato region increased from approximately 220,000 tonnes in 2006 to almost 310,000 in 2020.
- Higher water use – increase in water allocation as a percentage of primary allocable flow at the Waikato River mouth during the summer months from 67% in 2007 to 89% in 2024.<sup>11</sup>
- Lower levels of cultural respect – decrease in the percentage of survey respondents who agree that New Zealand becoming home for an increasing number of people with different lifestyles and cultures from different countries made their city/area a better place to live, from 51% in 2006 to 39% in 2022.
- More residential expansion onto highly productive land – increase in urban and rural residential use of highly productive land in the Waikato region, from 15,862 hectares in 2008 to 19,510 in 2019. The greatest amount of subdivision has been occurring on land classed as having higher productive capabilities.
- Lower levels of building activity – decrease in the real value of new building consents issued per capita per year from \$4,352 in 2007 (expressed in 2024 dollars) to \$3,420 in 2024.
- Lower levels of social connectedness – decrease in the percentage of survey respondents who agreed that they experienced a sense of community with others in their neighbourhood, from 63% in 2006 to 49% in 2024.
- Worse perceived health – decrease in the percentage of survey respondents who rate their overall health positively, from 90% in 2006 to 74% in 2024 (based on an average of four health-related survey items).
- Higher levels of income inequality – Increase in the level of income inequality as measured using a gini coefficient, from 0.351 in 2007 to 0.407 in 2024.
- Lower levels of life satisfaction – decrease in the percentage of survey respondents who rated their overall quality of life positively, from 90% in 2006 to 79% in 2024.
- Lower levels of community pride – decrease in the percentage of survey respondents who agree they feel a sense of pride in the way their local area looks and feels, from 70% in 2006 to 63% in 2024.
- Higher levels of crime – increase in the annual number of victimisations per 10,000 population from around 800 in 2007 to 861 in 2024.

The remaining WPI indicators do not show a significant change between 2006-07 and latest available data.

---

<sup>11</sup> While increased allocation of water up to 100% of the allocable flow is not necessarily negative, the observed trend of increasing water use towards the total allocable flow puts an added pressure on our water resources.

# Tupuranga Waikato Waikato Progress Indicators

## Scorecard 2025

The Waikato progress indicators (WPI) measures social, economic and environmental progress in the Waikato region.

This scorecard compares latest data with baseline results for each indicator (2006 - 2007). For each of the 32 indicators, results are shown as improving trends, worsening trends or no significant change over the last 16 years. The indicators are grouped by wellbeing theme - economic, social and environmental wellbeing. For further information refer to [waikatoregion.govt.nz/waikato-progress-indicators-tupuranga-waikato/](http://waikatoregion.govt.nz/waikato-progress-indicators-tupuranga-waikato/)



June 2025 (7660)

**Figure 1** WPI trends – Scorecard for approximately 2006-07 to latest available data (refer Appendix 2 for data).

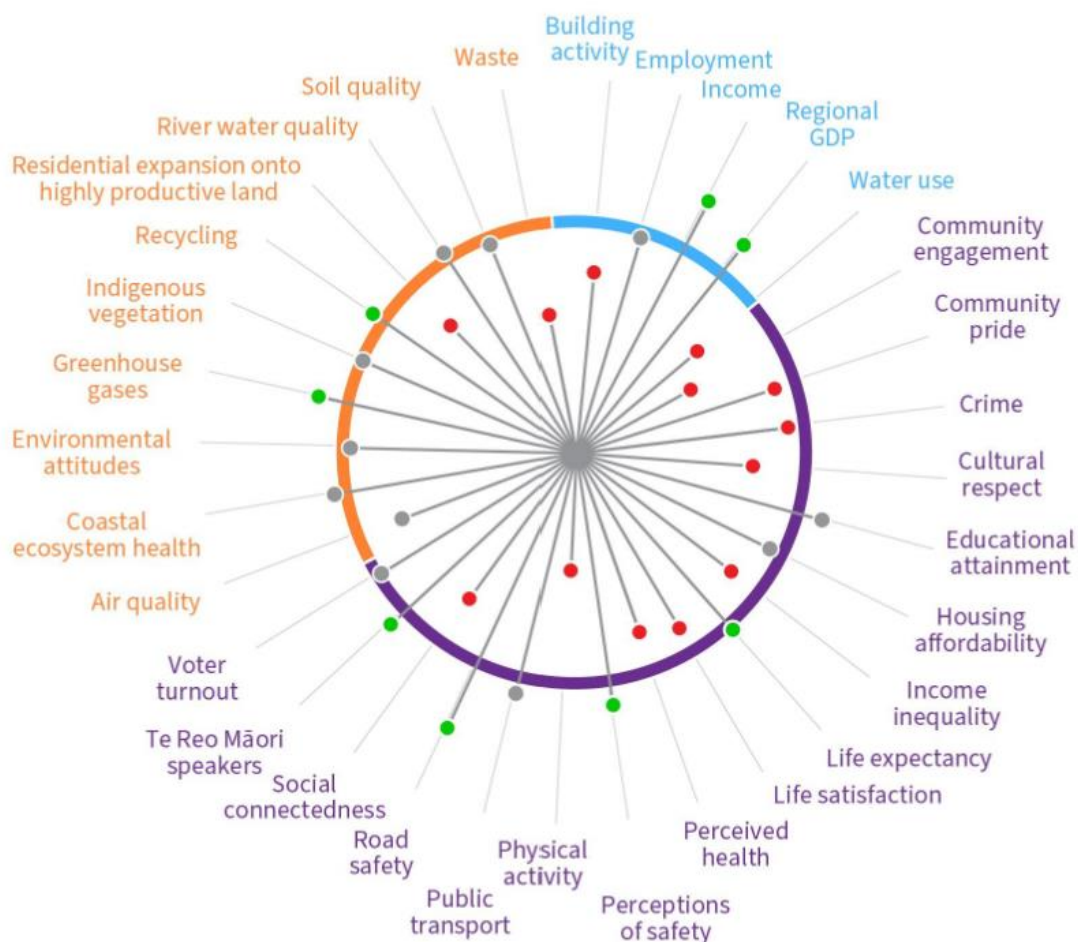
Source: WPI Monitoring Programme database (Waikato Regional Council)

## 2.3 Circles of Wellbeing

The WPI circle of wellbeing captures trend information about many indicators in one diagram. In addition to the simple 'better/worse/same' trend information provided in the scorecard (Figure 1), the circle of wellbeing diagrams also show the magnitude of any changes over time. The central circle represents the WPI score for each indicator in the Waikato region in the baseline year and the spokes show WPI score progress to latest available data. Where a spoke extends outside the circle it means regional wellbeing has improved over the past decade. Where a spoke falls within the circle, regional wellbeing has declined. The length of the spokes reflects the size of change. It is only from 2006-07 that there is a robust enough regional data set to cover all the WPI indicators. Over time, as the WPI monitoring programme extends into the future, the diagrams below will give an increasingly accurate signal of long-term regional progress.

As per the overall WPI Scorecard (Figure 1 above), the most notable **positive trends** over the long-term period 2006-07 to latest available data as shown in Figure 2 below (first circle) are, in declining order: road safety, incomes, regional GDP growth, greenhouse gases, perceptions of safety, Te Reo Māori speakers, recycling and life expectancy. The largest **negative trends** over this period are: lower frequency of physical activity, poorer perceptions of community engagement, more waste to landfill, higher water use, lower perceptions of cultural respect, more residential expansion onto highly productive land and lower levels of building activity.

Long term trends (2006/07 to latest data)



## Short term trends (2020 to latest data)



**Figure 2 WPI indicator long-term and short-term trends, Waikato region**

Source: WPI Monitoring Programme database (Waikato Regional Council)

Note: Long-term is 2006-07 to latest available data; Short-term is 2020 to latest available data

The second circle in Figure 2 takes the same approach but focuses on the more recent trend for the Waikato region from 2020 to latest available data. Observations from these graphs and supporting WPI information include:

- Annual greenhouse gas emissions fell substantially in recent years, although the Waikato continues to have relatively high emissions compared to other regions.
- Public transport use increased substantially in recent years following the COVID-19 pandemic and is now close to the baseline 2007 level, but less than peak levels seen in the 2010s.
- Perceptions of safety improved further between the 2022 and 2024 surveys.
- Annual building activity has declined rapidly following a 2021-22 peak.
- Criminal offence data was previously improving over the longer-term, but since 2018 the Waikato annual regional crime rate has trended upward.
- A range of other social indicators have also declined in recent years including surveyed measures of cultural respect, social connectedness, physical activity, life satisfaction, perceived health, community pride and community engagement and measures of educational attainment and road safety.
- One environmental indicator that have seen a recent adverse trend is water use.
- Over the longer-term, air quality shows an improvement but for the period 2020 to 2024 there was a general increase in the number of exceedances per year. This has been colour-coded as no significant change, due to the roll-out of new monitors which measure higher than the older monitors.

## 2.4 Comparison of Waikato with other regions and New Zealand

Table 1 and Figure 3 below show the latest indicator comparisons between the Waikato region, selected other regions and the New Zealand average where comparable data is available. This shows that the Waikato region is behind the national average on a range of economic, social, cultural and environmental wellbeing indicators.

Indicator	Waikato	Auckland	Wellington	Bay of Plenty	New Zealand
Building activity (\$m)	\$3,420	\$4,964	\$2,358	\$3,269	\$4,162
Employment	65.2%	69.4%	71.5%	63.8%	67.9%
Income	\$2,120	\$2,615	\$2,870	\$2,255	\$2,349
Regional GDP	\$68,598	\$88,355	\$92,776	\$67,650	\$78,233
Water use	89%	n/a	n/a	n/a	n/a
Community engagement	35%	34%	38%	n/a	35%
Community pride	63%	57%	46%	n/a	55%
Crime	861	754	691	737	705
Cultural respect	39%	n/a	n/a	n/a	n/a
Educational attainment	70.6%	80.7%	83.9%	74.0%	74.4%
Housing affordability	21.9%	24.0%	22.8%	20.8%	22.2%
Income inequality	0.407	0.446	0.413	0.376	0.408
Life expectancy	81.4	82.7	81.9	81.2	81.8
Life satisfaction	79%	75%	81%	n/a	77%
Perceived health	74%	71%	75%	n/a	72%
Perceptions of safety	66%	61%	76%	n/a	64%
Physical activity	31%	32%	40%	n/a	33%
Public transport	7.8	47.0	69.5	10.6	29.1
Road safety	\$3,392	\$1,272	\$1,243	\$2,306	\$2,246
Social connectedness	49%	42%	43%	n/a	42%
Te Reo Māori speakers	6.3%	2.6%	3.9%	9.0%	4.3%
Voter turnout	38.0%	35.2%	43.8%	40.4%	42.2%
Air quality	24	n/a	n/a	n/a	n/a
Coastal ecosystem health	0.42	n/a	n/a	n/a	n/a
Environmental attitudes	83%	n/a	n/a	n/a	n/a
Greenhouse gases	13.7	n/a	n/a	n/a	n/a
Indigenous vegetation	27.1%	n/a	n/a	n/a	n/a
Recycling	70.3%	86.1%	79.2%	72.6%	80.1%
Residential expansion onto highly productive land	19,510	n/a	n/a	n/a	n/a
River water quality	28%	n/a	n/a	n/a	n/a
Soil quality	85%	n/a	n/a	n/a	n/a
Waste	308,885	n/a	n/a	143,523	n/a

**Table 1 Comparison of WPI with selected other regions and New Zealand**

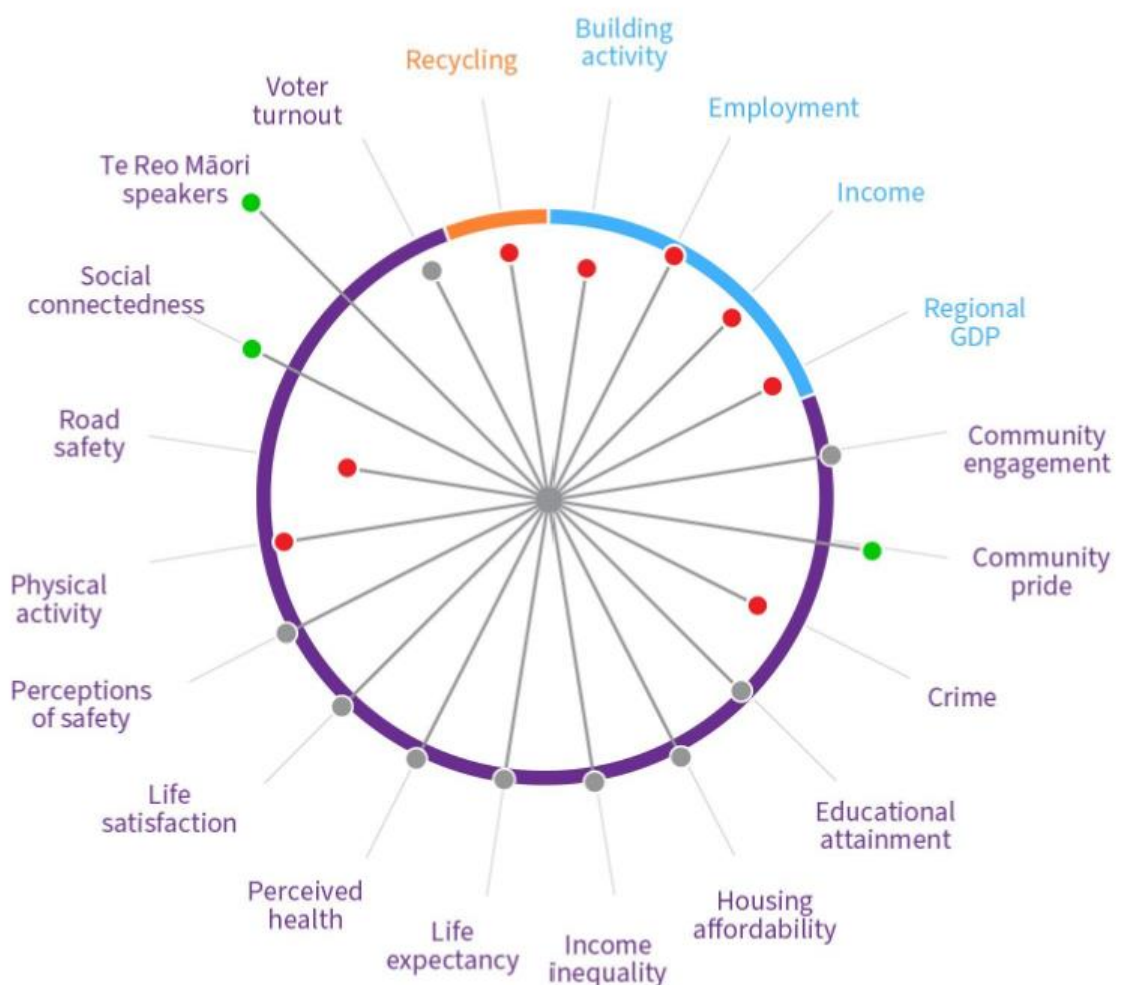
Source: WPI Monitoring Programme database (Waikato Regional Council)

*Note: Several indicators do not have comparable regional and/or national results (n/a) because either: (1) the WPI data are from a Waikato regional-specific survey (e.g. environmental attitudes) or (2) comparable regional data are not collected or comparison is not meaningful (e.g. soil quality, river water quality) or (3) scale-related data rather than dimensionless data are being used for the WPI indicator (e.g. residential expansion onto highly productive land, greenhouse gases).*

Comparisons of the Waikato region with the New Zealand average for specific key indicators are shown in Figure 3 using latest available data. In this diagram, the central circle represents national average wellbeing. Where a spoke extends outside the circle it means regional wellbeing is better than the national average and where it falls within the white circle, wellbeing is worse than the national average. For all WPI indicators not shown, directly comparable national results are not available.

The diagram shows that compared to the national average, the Waikato region:

- has a relatively high percentage of Te Reo Māori speakers and high levels of social connectedness (sense of community experienced) and community pride; but
- is behind the national average on a range of indicators including regional road safety, crime, employment, physical activity, household incomes, recycling, GDP per person and building activity per capita.



**Figure 3 Comparison Waikato region with New Zealand (selected indicators only)**

Source: WPI Monitoring Programme database (Waikato Regional Council)

*Note: Excludes indicators that do not have comparable regional or national results. Information based on latest measured data (i.e., no imputed or estimated missing values).*

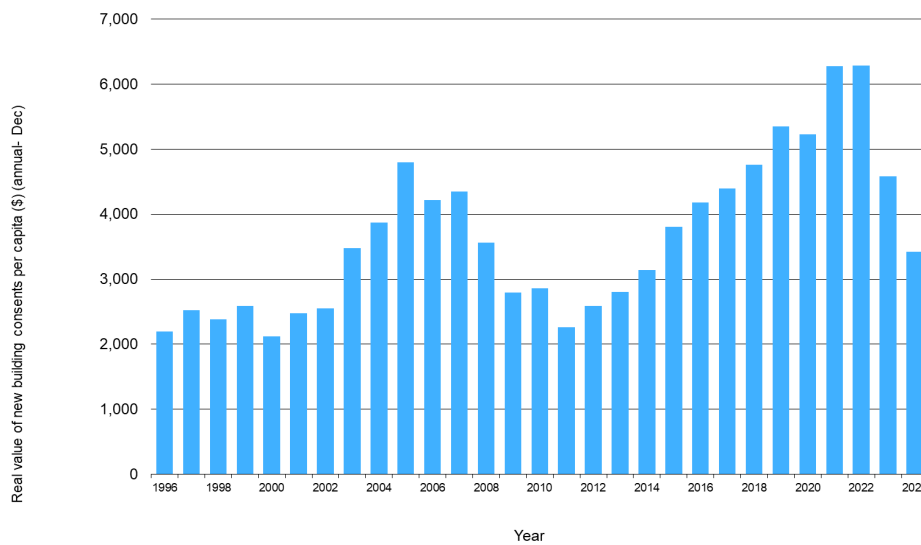
# 3 Economic trends

## 3.1 WPI results

Latest WPI results suggest a current slowing of the regional economy:

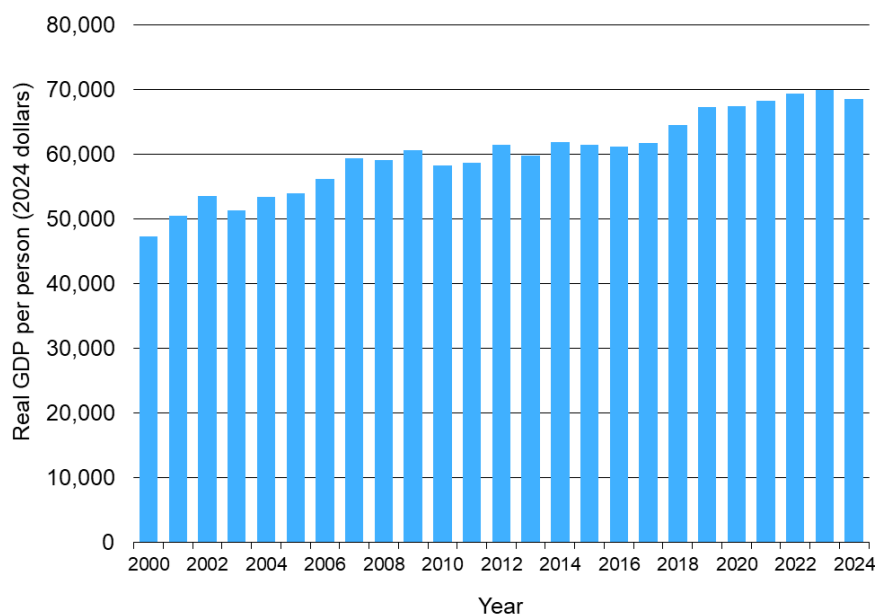
- The real value of annual new building consents per capita, a lead indicator of economic activity, dropped rapidly after 2022's record high (Figure 4). A similar pattern occurred in other regions.
- Between 2023 and 2024, the Waikato region's real GDP per person fell by 2.1 per cent (Figure 5) compared to an overall national decrease of 0.9 per cent.
- Also, in December 2024 the regional employment rate was 65.2% compared to 66.4% a year earlier.

**Figure 4** Real value of new building consents authorised per capita (\$) (annual – Dec)



Source: WPI Monitoring Programme database (Waikato Regional Council)

**Figure 5** Real GDP per person (2024 dollars)



Source: WPI Monitoring Programme database (Waikato Regional Council)

## 3.2 Additional economic context and insights

The WPI covers only selected data and measures. Additional context and insights can be gleaned by more focused economic analysis<sup>12, 13</sup> and statistics, e.g. “Place and ethnic group summary – Waikato Region” published by Statistics NZ.<sup>14</sup> For example, positive aspects of the Waikato regional economy include:

- + The Waikato region has a rapidly growing population, driven particularly by Hamilton City and the Waikato and Waipā Districts.
- + Collectively, the Waikato region provides 13% of New Zealand’s exports of goods and services, well above its share of national GDP.
- + The Waikato regional economy and export base has large contributions from the primary industries, particularly agriculture including dairy farming, as well as food manufacturing.
- + The region’s Māori economy continues to emerge as an economic force.

Negative aspects include:

- In recent years the Waikato region’s labour force participation rate has been declining whereas the national rate has been increasing.
- Productivity (GDP per worker) has been sluggish for an extended period and has declined over the last five years. Reversing this poor productivity performance would yield significant benefits, if done in a way that can be sustained.
- The roll-back in globalisation, increased use of tariffs, rising geo-political tensions and food security concerns in some of our export markets may also create issues for our export-oriented primary industries.
- The regional economy needs to adapt to the effects of climate change.

---

<sup>12</sup> Keenan, B, Mackay, S and Paragahawewa, U. 2022. The economy of the Waikato region in 2022. Waikato Regional Council Technical Report 2022/17.  
<https://www.waikatoregion.govt.nz/services/publications/tr202217/>

<sup>13</sup> Waikato Regional Spatial Inventory, 2024. Waikato Regional Council Policy Series 24/16, *in press*.

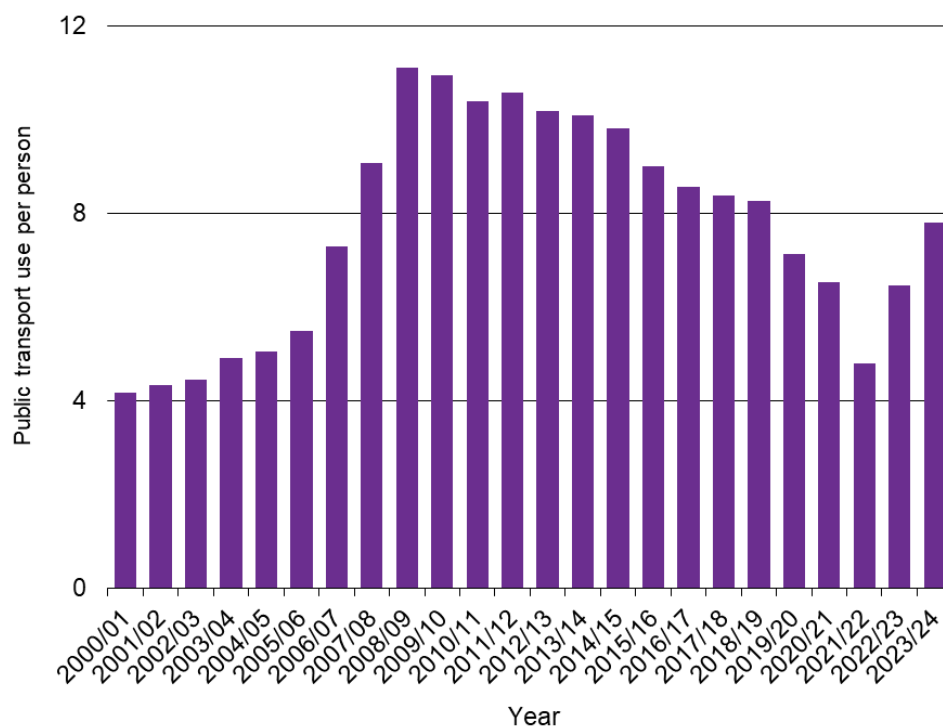
<sup>14</sup> <https://tools.summaries.stats.govt.nz/places/RC/waikato-region>



## 4 Social and cultural trends

### 4.1 WPI results

One difference compared to the last WPI update is a rapid rebound in public transport utilisation in the region. Followed by a slow but steady decrease, which accelerated during the COVID-19 pandemic, public transport use has increased in the past two years.



**Figure 6** Public transport use per person

Source: WPI Monitoring Programme database (Waikato Regional Council)

Overall, the latest WPI results show a mix of positive and negative social and cultural trends over the past two decades since around 2006-07.

#### Positives include:

- + Decrease in the social cost of road injury crashes.
- + Increase in the percentage of people who report feeling safe walking alone in their neighbourhood after dark.
- + Growth in te reo Māori speakers.
- + Longer life expectancy.

#### Negative social and cultural trends include decreases in the percentage of surveyed people who:

- Are physically active on a regular basis.
- Agree the public has an influence over the decisions their local Council makes.
- Agree that New Zealand becoming home for an increasing number of people with different lifestyles and cultures from different countries makes their city/area a better place to live.
- Feel a sense of community with others in their neighbourhood.
- Rate their overall health positively.
- Rate their overall quality of life positively.
- Feel a sense of pride in the way their local area looks and feels.
- In addition, measured levels of income inequality have increased; and the annual rate of criminal victimisations has also increased above 2007 levels.

## 4.2 Additional social and cultural context and insights

Additional context and insights can be found from other information sources, for example “Place and ethnic group summary – Waikato Region” published by Statistics NZ<sup>15</sup>, “Te Tai Waiora: Wellbeing in Aotearoa New Zealand 2022” prepared by the New Zealand Treasury<sup>16</sup>, The New Zealand Index of Socioeconomic Deprivation<sup>17</sup> and the Waikato Regional Council inventory of spatial information.<sup>18</sup> Some key positive aspects identified in these reports include:

- + The estimated residential population of the Waikato region (June 2023) is 516,800 people, an increase of 41,200 (8.7%) compared to five years ago.<sup>19</sup>
- + Life in New Zealand has improved in many ways over the past twenty years. For example, we are now healthier and live longer, are safer on our roads and workplaces, and our incomes are far higher than in the past.
- + Compared to other OECD countries, New Zealand is a good place to live in many ways. We enjoy very clean air, strong relationships, high life satisfaction and have a relatively high level of social cohesion and trust in one another.
- + New Zealand is a generally good place to live for most older people, with high levels of social support and a low likelihood of poverty.

Key negative aspects include:

- New Zealand performs less well on wellbeing for children and young people. Child poverty rates are declining but there are still many children and young people who have experienced poverty for much of their lives, including many disabled children and children in sole parent families. The evidence suggests that these children are likely to do less well over the course of their lives.
- An increasing number of children are not attending school and each year growing numbers of children are reaching age 15 without basic levels of literacy and numeracy.
- Teenagers and young adults have rapidly increasing levels of psychological distress and our youth suicide rate continues to be among the highest in the OECD.
- Changes in our housing markets have made it more difficult for young people to progress into home ownership. Renting is becoming increasingly common well into people’s 30s and 40s and our rental housing is among the least affordable in the OECD, particularly for people with the lowest incomes.

The Waikato Quality of Life survey 2024 measures people’s perceptions of several aspects related to their quality of life (results are also summarised for Hamilton City and by each district):<sup>20</sup>

- Most respondents rated their overall quality of life positively. For people who considered their quality of life had declined, the most common reasons related to reduced financial wellbeing, reduced healthcare and wellbeing and to a lesser extent, work related reasons.

---

<sup>15</sup> <https://tools.summaries.stats.govt.nz/places/RC/waikato-region>

<sup>16</sup> The Treasury, 2022. Te Tai Waiora: Wellbeing in Aotearoa New Zealand 2022. <https://www.treasury.govt.nz/publications/wellbeing-report/te-tai-waiora-2022>

<sup>17</sup> <https://www.stats.govt.nz/information-releases/new-zealand-index-of-socioeconomic-deprivation-2023-census/>

<sup>18</sup> Waikato Regional Spatial Inventory, 2024. Waikato Regional Council Policy Series 24/16, *in press*.

<sup>19</sup> <https://www.stats.govt.nz/information-releases/estimated-resident-population-2023-base-at-30-june-2023/#regional-growth>

<sup>20</sup> Waikato Quality of Life survey 2024. 2025, Waikato Regional Council Technical Report TR25-13, *In press*.

- Around three quarters agreed their local area is a great place to live.
- Around one third of respondents agreed that their current housing costs were affordable, while more than two-fifths disagreed.
- Around three quarters of respondents rated their overall health positively (based on average of four items). Of those who said they faced barriers to healthcare, the most commonly cited barriers were the wait time for an appointment and/or concerns about the financial cost.
- Around two thirds of respondents felt safe walking alone in their neighbourhood after dark.
- Around half of all respondents agreed they experience a sense of community with others in their neighbourhood. More than one in ten said they felt lonely or isolated either always or most of the time in the past 12 months.
- Around one third of all respondents felt they have enough or more than enough money to meet their everyday needs for things. Around one fifth felt they did not have enough money. More than one third said they worried 'always' or 'most of the time' about their and their family's financial circumstances in the last three months.
- Around one third of all respondents perceive the public have some or large influence over the decisions their local Council makes. Around one third have confidence that their local Council makes decisions in the best interests of their area.

Other, more specialised information sources are also available for specific areas of interest. For example, New Zealand Police routinely releases data on the last working day of each month via an interactive reporting tool<sup>21</sup> known as [policedata.nz](https://www.police.govt.nz/about-us/publications-statistics/data-and-statistics/policedatanz). This dataset shows that during the 2024 calendar year, there were around 38,500 victimisations reported within the Waikato Police Boundary. These were predominantly theft and related offences (58%) followed by acts intended to cause injury (20%), unlawful entry (19%) and other crime types (3%). The New Zealand Health Survey (NZHS)<sup>22</sup> provides information about the health and wellbeing of adults and children in New Zealand. The survey captures information about a range of health topics, such as alcohol use, vaping and smoking, mental health, eating habits, and access to health services. Results available by Health Region only.

---

<sup>21</sup> <https://www.police.govt.nz/about-us/publications-statistics/data-and-statistics/policedatanz>

<sup>22</sup> <https://www.health.govt.nz/statistics-research/surveys/new-zealand-health-survey>

# 5 Environmental trends

## 5.1 WPI results

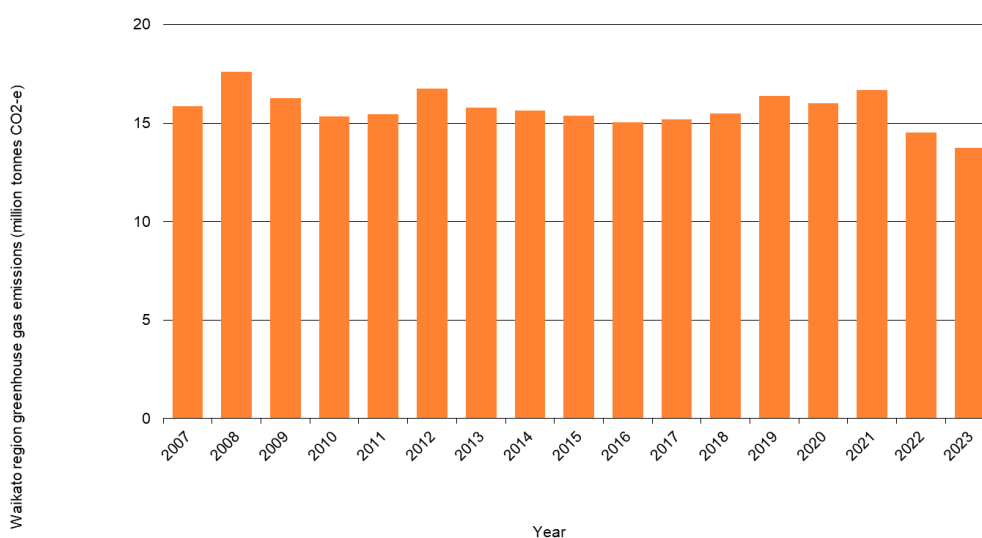
Latest WPI results show a mix of positive and negative environmental trends since 2006-07.

Positives include:

- + Decrease in regional annual greenhouse gas emissions from approximately 15.9 million tonnes of carbon dioxide equivalent (Mt CO<sub>2</sub>e) in 2007 to 13.7 million tonnes in 2023 (Figure 7).

Negatives include:

- Increased volume of waste to landfill, from an estimated 220,000 tonnes in 2006 to almost 310,000 in 2020.
- Increase in urban and rural residential expansion onto highly productive land.



**Figure 7** Waikato regional gross greenhouse gas emissions (million tonnes CO<sub>2</sub> equivalent)

Source: WPI Monitoring Programme database (Waikato Regional Council)

## 5.2 Additional environmental context and insights

Additional context and insights can be found in specialist publications, for example the Waikato State of the Environment report<sup>23</sup>, including several technical reports on specific topics<sup>24</sup>, Land and Water Aotearoa<sup>25</sup> and the Waikato Regional Spatial Inventory.<sup>26</sup> Key positive environmental aspects include:

- + Air quality is mostly good, although some urban areas in winter do not meet national air quality standards.
- + Soil quality is improving overall, although compaction and excessively high fertility are still issues on some farms.

<sup>23</sup> Te orange o te taiao Waikato State of the Environment 2022. Waikato Regional Council Policy Series PS23/04. <https://www.waikatoregion.govt.nz/assets/WRC/7364-SOE-report-2022-WR.pdf>

<sup>24</sup> <https://www.waikatoregion.govt.nz/services/publications/>

<sup>25</sup> <https://www.lawa.org.nz/>

<sup>26</sup> Waikato Regional Spatial Inventory, 2024. Waikato Regional Council Policy Series 24/16, *in press*.

- + The load of contaminants to rivers has decreased, contributing to decreasing phosphorus levels.
- + Lake Taupō is achieving water quality targets ahead of schedule, following the introduction of a nitrogen cap and trade scheme.

Key negative aspects include:

- A rising population has seen urban development encroach on surrounding farmland.
- The area of land used for pastoral farming and land use intensification have both increased, driven by conversion of planted forest to pastoral land and dairy farms.
- About 75% of the region's peatlands have been drained, releasing significant emissions of carbon dioxide, which contribute to climate change.
- River flow has reduced markedly, due to less rainfall, increased evaporation and increased water use for irrigation.
- Water security is of increasing concern, particularly for the growing population of Hamilton.
- Diffuse nitrogen has continued to worsen in many rivers and streams.
- Despite extensive fencing and planting of streambanks by farmers and community groups, bacteria levels in our rivers remain high.
- Many shallow lakes are dominated by algae blooms.
- Lowland waterways are in a degraded state and many rivers do not meet national bottom lines for ecosystem health.
- Wetlands and forest continue to be subject to development pressures.

In addition, the 2022 “Your environment – what matters?” survey revealed that:<sup>27</sup>

- Issues identified by residents as most important for the region in five years’ time include water quality, climate change, population and urban growth and consequential pressures on infrastructure and air quality.
- Respondents’ self-rated knowledge of environmental issues declined slightly from the 2019 survey, with a greater number of respondents rating their knowledge as poor (9% in 2019, 14% in 2022).
- There was an increase in the proportion of respondents rated mid-ecological, a decrease in those rated pro-ecological and an increase in the proportion of those rated anti-ecological.
- 75% of respondents reported concern with the effects of climate change and 73% had undertaken activities to reduce greenhouse gas emissions (an increase of 7% since 2019). The primary actions people took to reduce emissions were adopting more eco-friendly travel methods (35%) or changing heating/electricity methods (10%).
- 77% percent of respondents agreed that their household does all they can to reduce waste, while 46% agreed that they would like to reduce their waste more but were unsure how.

---

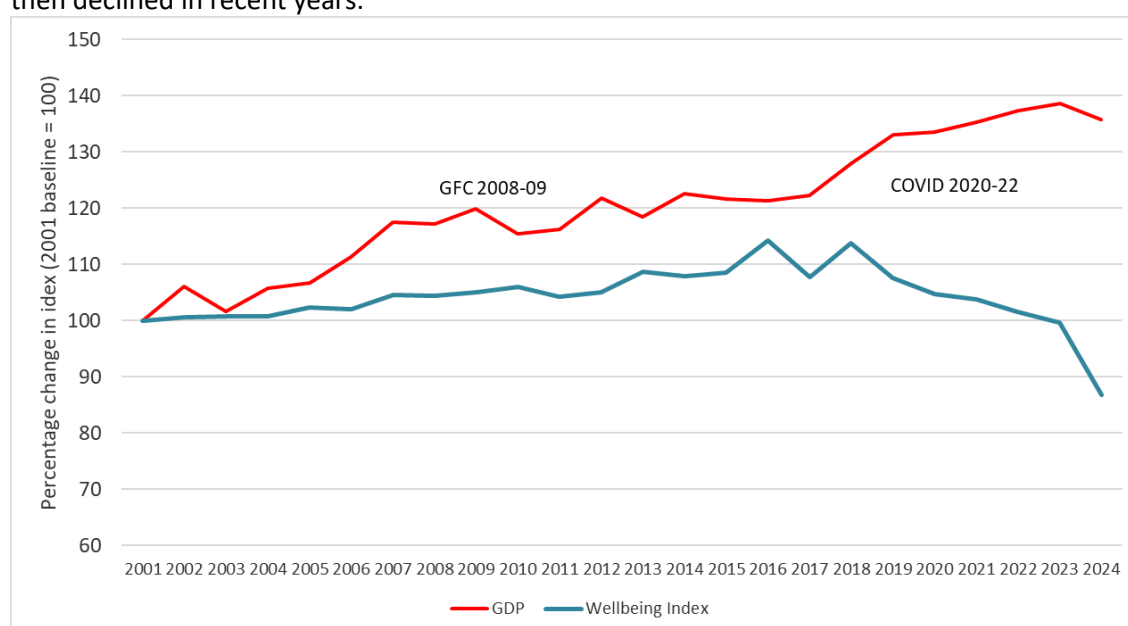
<sup>27</sup> Hackell, M. 2022. Your environment – what matters, Waikato Regional Council Technical Report, 2022/48. <https://www.waikatoregion.govt.nz/services/publications/tr202248/>

## 6 Overall progress (wellbeing index)

Work has been undertaken to investigate methods for deriving a composite index using the WPI dataset (Huser *et al.* 2016).<sup>28</sup> This has involved combining all 32 WPI indicators into a single composite number (index). Approaches explored to derive an experimental Waikato Wellbeing Index have included Principal Components Analysis (PCA) and the Canadian Index of Wellbeing (CIW) reference-year method (Michalos *et al.* 2011). Both approaches show a common pattern.

As illustrated below (Figure 8), the gap between GDP and the Wellbeing Index grew from 2003 to 2009, then narrowed and eventually grew again as the economy rebounded after the global financial crisis (GFC). By 2019 there was a sizeable gap between the regional GDP measure and WPI overall wellbeing index. This gap has now widened further following the 2020-22 global COVID-19 pandemic.

In summary, while real GDP per capita has generally increased over the past two decades, overall community wellbeing as measured using the WPI indicators increased at a slower pace and has then declined in recent years.



**Figure 8 GDP vs Waikato Wellbeing Index (CIW method) 2001-2024 (provisional)**

Source: WPI Monitoring Programme database (Waikato Regional Council)

Note: Based on actual and imputed data (2024 index is provisional).

<sup>28</sup> *Towards a wellbeing index for the Waikato Region*. New Zealand Planning Quarterly, Issue 200, 2016.

## 7 Other wellbeing initiatives

Monitoring and reporting on progress towards economic, social, cultural and environmental wellbeing requires a collaborative approach engaging and working across central and local government, iwi, business, communities and other stakeholders.

The WPI wellbeing framework and indicators build on and are aligned with relevant national initiatives. Treasury has developed a Living Standards Framework and associated Dashboard<sup>29</sup> to monitor intergenerational wellbeing and support Government's budget process. Treasury's Living Standards Framework is underpinned by Statistics NZ's set of wellbeing indicators (*Ngā Tūtohu Aotearoa – Indicators Aotearoa New Zealand*).<sup>30</sup> Many of the WPI indicators are the same/similar as those used nationally, allowing a comparison between Waikato and New Zealand data (Figure 3).

In the Waikato the WPI project works closely with other councils, community trusts and the Waikato Wellbeing Project (WWP), sharing data and knowledge.<sup>31</sup> The WWP uses the global Sustainable Development Goals<sup>32</sup> as a framework to identify relevant local targets for the Waikato. Progress on these WWP targets have recently been reported by collating available local data, comparing these with New Zealand and global data and presenting additional background information.<sup>33</sup>

## 8 Next steps

The results of the WPI programme provide a robust basis for discussing regional challenges and opportunities and identifying priorities for actions and closer collaboration and partnerships. Results from the WPI help monitor and inform Council's strategic direction and other (sub)region-wide initiatives, such as Future Proof<sup>34</sup> and other growth strategies and spatial plans, economic development strategies and regional spatial planning proposed as part of the resource management system review. Selected individual indicators that reflect Waikato Regional Council's functions and roles are included as performance measures in Council's Long Term Plan 2024-2034, Annual Reports and other council documents. Such multiple use of the WPI data ensures cost effective and consistent use of information.

In addition to the 32 high level measures, the WPI programme compiles secondary indicators and data by territorial authority (where available) to support more detailed and local community analysis about how and why levels of wellbeing are changing over time. Data is also available for many of the indicators on their distributional aspects, such as information by age, gender, ethnicity, income or locality. The biennial Waikato Quality of Life survey and regular reports on socio-economic deprivation provide information about (respectively) people's views and perceptions and socio-economic status at the district council level. A priority for the WPI project

---

<sup>29</sup> <https://www.treasury.govt.nz/publications/commissioned-report/treasury-living-standards-dashboard-monitoring-intergenerational-wellbeing>

<sup>30</sup> <https://www.stats.govt.nz/reports/indicators-aotearoa-new-zealand-nga-tutohu-aotearoa-key-findings-from-consultation-and-engagement>

<sup>31</sup> <https://www.waikatowellbeingproject.co.nz/>

<sup>32</sup> In 2015, all 193 UN member countries adopted a set of goals to target the world's most pressing issues. Referred to as the Sustainable Development Goals (SDGs), these 17 goals and their 169 targets seek to end poverty, protect the planet, and ensure that all people enjoy peace and prosperity by promoting inclusive, equitable, safe, and sustainable societies. [www.un.org/sustainabledevelopment/sustainable-development-goals/](http://www.un.org/sustainabledevelopment/sustainable-development-goals/)

<sup>33</sup> Wellbeing Progress Update, 2023. Waikato Wellbeing Project. [https://issuu.com/waikatowellbeingproject/docs/wwb\\_annual\\_report\\_final\\_new\\_lr](https://issuu.com/waikatowellbeingproject/docs/wwb_annual_report_final_new_lr)

<sup>34</sup> <https://futureproof.org.nz/>

is to continue working with Treasury, Statistics NZ and Local Government NZ/Taituarā to align national, regional and local data and indicators and to fill any data gaps.

The focus for future development of the WPI work programme includes:

1. Communication and engagement: ongoing sharing of data and services with other agencies and the community, particularly territorial authorities, iwi, central government, community trusts/foundations and other regions.
2. Refresh the Waikato community outcomes: The 32 WPI indicators are based on the community outcomes identified through a comprehensive and collaborative community and stakeholder process undertaken in the Waikato region and its districts. (Choosing Futures Waikato 2006/07– “*what matters most to our people and communities*”).<sup>35</sup> Develop sub-regional local information summaries: For example, publishing district/community profiles including maps of deprivation. This would require working jointly with territorial authorities, iwi, business, central government (Te Whatu Ora, Kainga Ora) and other agencies. Regional data is highly aggregated which can mask local trends. Data/information at the community level is critical, for example the mix of drivers for deprivation differ considerably across the region and even within territorial authorities. Socioeconomic deprivation within the Waikato region varies considerably with some areas ranking among the most deprived areas in New Zealand.<sup>36</sup>
3. From data to insights: There is value in undertaking additional analysis of the high level WPI data to provide local insights and how specific groups of people are doing compared to the average. A continuing and increasing focus for the WPI programme is therefore to share data, align indicators with other agencies and in particular turning data into insights by engaging with strategic regional and local partners to create shared knowledge and insights. This includes exploring connections between the 32 WPI indicators and topics, for example between air pollution and human health or estimating the value of the environment to our economy. Such integrated and in-depth analysis of the data can be used for storytelling and to produce think pieces on regional issues.
4. Strengthen planning and decision-making using an integrated lens across social, cultural, economic and environmental aspects: Currently, the purpose of local government is “*to promote the social, economic, environmental and cultural well-being of communities in the present and for the future*”. However, the Coalition Government has signalled to delete any reference to wellbeing and to refocus the purpose statement in the Local Government Act 2002 on delivering essential services and core infrastructure.<sup>37</sup> Spatial planning and effective policy and decision-making continues to require an integrated understanding, for example links between economic growth and inequality, or between the environment and the economy. It is increasingly recognised that the economy and the health and wellbeing of people and communities are dependent on a healthy, well-functioning environment. As climate change clearly demonstrates there are environmental limits and planetary boundaries (e.g. no more than 1.5°C of atmospheric warming) that we need to live within.<sup>38</sup> The critical importance of the environment is also consistent with a Te Ao Māori view of the world.<sup>39</sup>

---

35

[https://www.waikatoregion.govt.nz/assets/PageFiles/36757/CFW\\_Where\\_to\\_from\\_here\\_3\\_Jul\\_2007.pdf](https://www.waikatoregion.govt.nz/assets/PageFiles/36757/CFW_Where_to_from_here_3_Jul_2007.pdf)

36 <https://www.stats.govt.nz/information-releases/new-zealand-index-of-socioeconomic-deprivation-2023-census/>

37 <https://www.beehive.govt.nz/release/government-getting-local-government-back-basics>

38 <https://environment.govt.nz/publications/a-safe-operating-space-for-new-zealandaotearoa-translating-the-planetary-boundaries-framework/>

39 <https://www.tpk.govt.nz/en/o-matou-mohiotanga/maori-enterprise/an-indigenous-approach-to-the-living-standards-fra>



# References

- Hackell M. 2022. Your environment – what matters? Waikato Regional Council Technical Report 2022/48. Hamilton, Waikato Regional Council.  
<https://www.waikatoregion.govt.nz/assets/WRC/TR202248.pdf>
- Huser B, Killerby P, Patterson M. 2016. Towards a wellbeing index for the Waikato Region. New Zealand Planning Quarterly 200:8-13.
- Keenan B, Mackay S, Paragahawewa U. 2022. The economy of the Waikato region in 2022. Waikato Regional Council Technical Report 2022/17. Hamilton, Waikato Regional Council.  
<https://www.waikatoregion.govt.nz/assets/WRC/TR202217.pdf>
- Killerby P, Huser B. 2014. Development of the Waikato Progress Indicators (WPI). Waikato Regional Council Technical Report 2014/44. Hamilton, Waikato Regional Council.  
[www.waikatoregion.govt.nz/services/publications/tr201444/](http://www.waikatoregion.govt.nz/services/publications/tr201444/)
- Michalos AC, Smale B, Labonté R, Muharjarine N, Scott K, Moore K, Swystun L, Holden B, Bernardin H, Dunning B, Graham P, Guhn M, Gadermann AM, Zumbo BD, Morgan A, Brooker A-S, Hyman I. 2011. The Canadian index of wellbeing. Technical Report 1.0. Waterloo, ON, Canadian Index of Wellbeing and University of Waterloo.  
[https://uwaterloo.ca/canadian-index-wellbeing/sites/ca.canadian-index-wellbeing/files/uploads/files/Canadian\\_Index\\_of\\_Wellbeing-TechnicalPaper-FINAL.pdf](https://uwaterloo.ca/canadian-index-wellbeing/sites/ca.canadian-index-wellbeing/files/uploads/files/Canadian_Index_of_Wellbeing-TechnicalPaper-FINAL.pdf)
- The New Zealand Treasury. 2022. Te tai waiora: wellbeing in Aotearoa New Zealand 2022.  
<https://www.treasury.govt.nz/publications/wellbeing-report/te-tai-waiora-2022>
- Waikato Regional Council. 2023. Te oranga o te taiao Waikato state of the environment 2022. Waikato Regional Council Policy Series 2023/04. Hamilton, Waikato Regional Council.  
<https://www.waikatoregion.govt.nz/assets/WRC/7364-SOE-report-2022-WR.pdf>
- Waikato Wellbeing Project. 2023. Wellbeing progress update 2023.  
[https://www.waikatowellbeingproject.co.nz/site\\_files/36997/upload\\_files/WWBAnnualReportFINALNEWLR\(1\).pdf?dl=1](https://www.waikatowellbeingproject.co.nz/site_files/36997/upload_files/WWBAnnualReportFINALNEWLR(1).pdf?dl=1)

# Appendix 1 The Waikato Progress Indicators

Key questions	Topic	Indicator	Definition (current as at May 2025)
<b>Economy</b>			
How prosperous is our region? How are we planning for a prosperous future?	Wealth and income	Building activity	Real value of total new building consents issued per annum (year to December)
How many people have a job? How many are unemployed - and how long	Employment	Employment	Employment rate - the proportion of total working age population who are employed
How wealthy are we?	Wealth and income	Income	Real median weekly household income
How prosperous is our region? How are we planning for a prosperous future?	Economic growth	Regional GDP	Real (inflation adjusted) regional Gross Domestic Product (GDP) per capita
How do we use our natural resources? How much water do we use? How much have we got?	Resource use	Water use	Water allocation as a percent of primary allocable flow – Waikato River mouth during summer months
<b>Society</b>			
Are we satisfied with our opportunity to participate in (council) decision making?	Civic engagement	Community engagement	Percentage of people who agree that the public have 'large' or 'some' influence over the decisions that their local Council makes
Are we proud about where we live and our community?	Social connectedness	Community pride	People's reported sense of pride in the way their city/town looks and feels
How safe are we?	Community safety	Crime	Rates of recorded victimisations per 10,000 population (year to December)
Do we know and respect other cultures?	Cultural identity	Cultural respect	Level of agreement by survey respondents that New Zealand becoming home for an increasing number of people with different lifestyles and cultures from different countries makes their area a better place to live
What are the educational opportunities How qualified and skilled is our workforce? Are education opportunities accessible and adequate	Education	Educational attainment	Percentage of school leavers with NCEA level 2 or above
Are we satisfied with our housing? How accessible, adequate and affordable is our housing?	Housing	Housing affordability	Ratio of housing costs to household disposable income
Wealth and income	Wealth and income	Income inequality	Gini coefficient – a measure of the concentration of income within the region
How healthy are we?	Health	Life expectancy	Life expectancy at birth (from Life Tables estimated using Census data)

Key questions	Topic	Indicator	Definition (current as at May 2025)
Are we generally happy with our life? How satisfied are we with our work life balance?	Life satisfaction	Life satisfaction	Percentage of people who rate their overall quality of life positively
How do we feel about our health and wellbeing?	Health	Perceived health	Percentage of people who rate their overall health good, very good or excellent.  From 2024, this indicator is the average of four items relating to physical, mental, spiritual and relationship health
Do we feel safe?	Community safety	Perceptions of safety	Percentage of adults who feel safe walking alone in their neighbourhood after dark
How much do we participate in sports, leisure and arts?	Leisure and recreation	Physical activity	Percentage of people who say they were physically active on five or more of the past seven days
Does our infrastructure cope with current and increasing demand? What services are available?	Infrastructure	Public transport	Public transport volumes per capita – average number of passenger transport boardings per resident per annum
How safe are we?	Community safety	Road safety	Estimated annual social costs of road injury crashes per capita
How well connected are we with our family, neighbourhood and community?	Social connectedness	Social connectedness	Percentage of people who agree or strongly agree that they experience a sense of community with others in their neighbourhood
Do we recognise and protect our cultural heritage and distinctive identity? How comfortable do we feel about expressing our cultural practices?	Cultural identity	Te Reo Māori speakers	Percentage of Te Reo Māori speakers in the total population
Are we involved in our community? How much do we participate in decision making?	Civic engagement	Voter turnout	Average voter turnout in local council, DHB and regional council elections
<b>Environment</b>			
How clean is our air?	Air and climate	Air quality	Urban air quality – number of exceedances per year of the regional guideline for particulate matter (all monitoring sites total)
How healthy is our coastal and marine environment? How safe are our beaches for swimming?	Coastal and marine	Coastal ecosystem health	Traits Based Index (TBI) of the biological traits of sediment-dwelling animal communities in three estuaries the southern Firth of Thames, Whaingaroa (Raglan) Harbour and Tairua Harbour
How much do we value or environment? Can we sustain a healthy environment <u>and</u> grow our economy? What do we value most? What are the threats to our environment?	Environmental values	Environmental attitudes	Average regional NEP (New Environmental Paradigm) Scale score

<b>Key questions</b>	<b>Topic</b>	<b>Indicator</b>	<b>Definition (current as at May 2025)</b>
Is the climate changing?	Air and climate	Greenhouse gases	Regional annual total greenhouse gas emissions – from the Waikato Region Comprehensive Greenhouse Gas Inventory
How much of our environment is protected? What is the health and condition of our ecosystems?	Biodiversity	Indigenous vegetation	Extent of indigenous vegetation on land
How much of our waste do we recycle?	Waste	Recycling	Self-reported prevalence of household recycling
How much land is sub-divided/paved every year? How much of this is fertile soil?	Land and water	Urban and rural residential expansion onto highly productive land	Area (hectares) of highly productive land (Land Use Capability classes 1-3) in urban and rural residential use in the Waikato Region
How good is our water quality?	Land and water	River water quality	River water quality for ecological health – percentage of unsatisfactory river water samples for ecological water quality in Waikato rivers and streams (all sites average)
How healthy are our soils? How resilient are we to food production?	Land and water	Soil quality	Percentage of soil monitoring sites meeting five or more soil quality targets - Waikato Region
How much pollution and waste do we produce? What sort of waste do we produce? How much per GDP/product?	Waste	Waste	Estimated tonnage of waste to landfill per annum

## Appendix 2 WPI time series data 2001 to 2024

Key:

Grey cell indicates imputed or extrapolated data

White cell indicates measured data

Note that the trend direction for some of these indicators has a negative interpretation (e.g. crime).

Indicator	2001	2002	2003	2004	2005	2006	2007	2008	2009	2010
Building activity	\$2,473	\$2,548	\$3,480	\$3,867	\$4,793	\$4,218	\$4,352	\$3,565	\$2,793	\$2,856
Employment	62.2%	64.9%	65.5%	65.7%	65.6%	66.7%	67.1%	66.8%	64.7%	63.6%
Income	\$1,435	\$1,497	\$1,530	\$1,471	\$1,617	\$1,675	\$1,725	\$1,764	\$1,727	\$1,633
Regional GDP	\$50,546	\$53,606	\$51,352	\$53,437	\$53,956	\$56,250	\$59,407	\$59,220	\$60,628	\$58,342
Water use	67%	67%	67%	67%	67%	67%	67%	65%	64%	69%
Community engagement	62%	62%	62%	62%	62%	62%	60%	59%	57%	56%
Community pride	70%	70%	70%	70%	70%	70%	70%	70%	69%	69%
Crime	832.4	840.6	780.5	720.6	769.8	833.6	797.9	760.6	828.9	802.9
Cultural respect	51%	51%	51%	51%	51%	51%	50%	49%	49%	48%
Educational attainment	64.2%	64.2%	64.2%	64.2%	64.2%	64.2%	64.2%	64.2%	64.2%	66.4%
Housing affordability	20.5%	20.5%	20.5%	20.5%	20.5%	20.5%	20.5%	18.6%	20.5%	17.7%
Income inequality	0.351	0.351	0.351	0.351	0.351	0.351	0.351	0.401	0.315	0.355
Life expectancy	78.5	78.8	79.0	79.3	79.5	79.8	80.0	80.1	80.3	80.5
Life satisfaction	90%	90%	90%	90%	90%	90%	89%	89%	88%	88%
Perceived health	90%	90%	90%	90%	90%	90%	89%	89%	88%	88%
Perceptions of safety	60%	60%	60%	60%	60%	60%	61%	61%	62%	62%
Physical activity	61%	61%	61%	61%	61%	61%	60%	58%	57%	55%
Public transport	4.2	4.3	4.5	4.9	5.1	5.5	7.3	9.1	11.1	11.0
Road safety	5,074	5,074	5,074	5,074	5,194	4,479	5,563	4,739	4,188	4,020
Social connectedness	63%	63%	63%	63%	63%	63%	63%	63%	64%	64%
Te Reo Māori speakers	6.4%	6.3%	6.2%	6.0%	5.9%	5.8%	5.7%	5.7%	5.6%	5.5%
Voter turnout	38.6%	38.6%	38.6%	38.6%	38.6%	38.6%	38.6%	39.8%	41.0%	42.2%
Air quality	17	17	27	50	38	47	20	28	38	22
Coastal ecosystem health	0.40	0.40	0.40	0.40	0.40	0.40	0.40	0.40	0.40	0.40
Environmental attitudes	77%	77%	77%	77%	79%	81%	83%	86%	86%	87%
Greenhouse gases	15.9	15.9	15.9	15.9	15.9	15.9	15.9	17.6	16.3	15.3
Indigenous vegetation	27.1%	27.1%	27.1%	27.1%	27.1%	27.1%	27.1%	27.1%	27.1%	27.1%
Recycling	66.2%	66.2%	66.2%	66.2%	66.2%	66.2%	66.2%	66.2%	68.9%	71.5%
Residential expansion onto highly productive land	11,976	11,976	12,624	13,271	13,919	14,567	15,214	15,862	16,140	16,419
River water quality	29.0%	29.0%	29.0%	29.0%	29.0%	29.0%	29.0%	29.0%	29.0%	29.0%
Soil quality	88%	88%	88%	88%	89%	88%	88%	86%	83%	83%
Waste	222,000	222,000	222,000	222,000	222,000	222,000	222,815	223,629	224,444	225,258

Appendix 2 cont.

Indicator	2011	2012	2013	2014	2015	2016	2017	2018	2019	2020
Building activity	\$2,265	\$2,585	\$2,806	\$3,139	\$3,808	\$4,175	\$4,397	\$4,761	\$5,344	\$5,227
Employment	64.6%	62.5%	63.6%	64.2%	64.2%	65.2%	69.0%	70.0%	68.0%	67.1%
Income	\$1,550	\$1,628	\$1,650	\$1,580	\$1,708	\$1,923	\$1,905	\$2,099	\$2,127	\$2,080
Regional GDP	\$58,721	\$61,580	\$59,842	\$61,952	\$61,454	\$61,277	\$61,796	\$64,641	\$67,284	\$67,450
Water use	72%	76%	87%	86%	86%	86%	85%	86%	85%	83%
Community engagement	54%	52%	51%	49%	48%	46%	41%	36%	37%	37%
Community pride	69%	69%	69%	68%	68%	68%	65%	62%	65%	67%
Crime	806.9	739.0	722.3	652.6	582.6	625.0	624.5	588.8	660.6	627.7
Cultural respect	47%	46%	45%	45%	44%	43%	42%	41%	44%	47%
Educational attainment	69.5%	72.0%	73.6%	76.1%	77.6%	79.6%	78.6%	79.2%	78.4%	80.0%
Housing affordability	18.3%	20.1%	17.2%	20.3%	18.9%	20.4%	19.9%	20.2%	19.6%	20.6%
Income inequality	0.393	0.412	0.342	0.375	0.444	0.413	0.417	0.395	0.410	0.382
Life expectancy	80.6	80.8	81.0	81.0	81.1	81.2	81.3	81.4	81.4	81.4
Life satisfaction	87%	86%	86%	85%	85%	84%	86%	87%	88%	88%
Perceived health	87%	86%	86%	85%	85%	84%	82%	79%	79%	79%
Perceptions of safety	63%	63%	64%	64%	65%	65%	65%	64%	63%	62%
Physical activity	54%	53%	51%	50%	48%	47%	44%	40%	38%	35%
Public transport	10.4	10.6	10.2	10.1	9.8	9.0	8.6	8.4	8.3	7.1
Road safety	3,863	3,556	2,567	3,092	3,784	3,684	3,596	3,669	3,455	3,130
Social connectedness	64%	64%	64%	65%	65%	65%	64%	62%	59%	56%
Te Reo Māori speakers	5.4%	5.4%	5.3%	5.4%	5.5%	5.7%	5.8%	5.9%	6.0%	6.0%
Voter turnout	41.5%	40.7%	40.0%	39.2%	38.5%	37.7%	39.6%	41.6%	43.5%	41.7%
Air quality	20	17	12	11	10	5	12	2	5	13
Coastal ecosystem health	0.40	0.40	0.38	0.38	0.38	0.41	0.40	0.39	0.36	0.40
Environmental attitudes	88%	88%	89%	89%	88%	88%	88%	87%	87%	86%
Greenhouse gases	15.4	16.7	15.8	15.6	15.4	15.0	15.2	15.5	16.4	16.0
Indigenous vegetation	27.1%	27.1%	27.1%	27.1%	27.1%	27.1%	27.1%	27.1%	27.1%	27.1%
Recycling	70.9%	70.3%	70.3%	70.3%	70.3%	70.3%	70.3%	70.3%	70.3%	70.3%
Residential expansion onto highly productive land	16,697	16,975	17,337	17,699	18,061	18,424	18,786	19,148	19,510	19,510
River water quality	29.0%	29.0%	29.0%	28.0%	27.9%	28.0%	28.0%	29.0%	29.0%	29.0%
Soil quality	81%	80%	82%	81%	82%	86%	86%	83%	85%	87%
Waste	226,073	226,887	227,499	228,111	228,723	224,732	220,741	250,122	279,504	308,885

Appendix 2 cont.

Indicator	2021	2022	2023	2024
Building activity	\$6,272	\$6,288	\$4,583	\$3,420
Employment	67.2%	67.1%	66.4%	65.2%
Income	\$2,130	\$2,120	\$2,149	\$2,120
Regional GDP	\$68,332	\$69,403	\$70,038	\$68,598
Water use	90%	90%	91%	89%
Community engagement	34%	31%	33%	35%
Community pride	66%	64%	64%	63%
Crime	689.1	842.5	855.9	861.1
Cultural respect	43%	39%	39%	39%
Educational attainment	78.6%	73.4%	70.6%	70.6%
Housing affordability	19.9%	21.1%	22.3%	21.9%
Income inequality	0.362	0.355	0.391	0.407
Life expectancy	81.4	81.4	81.4	81.4
Life satisfaction	87%	86%	83%	79%
Perceived health	80%	80%	77%	74%
Perceptions of safety	63%	63%	65%	66%
Physical activity	38%	41%	36%	31%
Public transport	6.5	4.8	6.5	7.8
Road safety	3,091	3,700	3,392	3,392
Social connectedness	57%	57%	53%	49%
Te Reo Māori speakers	6.1%	6.2%	6.3%	6.3%
Voter turnout	39.8%	38.0%	38.0%	38.0%
Air quality*	39	15	18	24
Coastal ecosystem health	0.39	0.40	0.42	0.39
Environmental attitudes	84%	83%	83%	83%
Greenhouse gases	16.7	14.5	13.7	13.7
Indigenous vegetation	27.1%	27.1%	27.1%	27.1%
Recycling	70.3%	70.3%	70.3%	70.3%
Residential expansion onto highly productive land	19,510	19,510	19,510	19,510
River water quality	29.0%	29.0%	29.0%	28.0%
Soil quality	89%	90%	85%	85%
Waste	308,885	308,885	308,885	308,885

Note \* There is a time series break in the air quality indicator from around 2019/20 due to the roll-out of new optical based monitors which measure more exceedances than the older monitors.